



FLOORSSPACE

For Sublease

565 Great Northern Way

THE LOCATION

Nestled in the False Creek Flats, this AAA property is steps from the future Great Northern Way SkyTrain Station, offering a blend of urban conveniences and natural beauty.

Adjacent to Emily Carr University and the Centre for Digital Media, the neighbourhood is also known as a hub for arts, technology and culture.



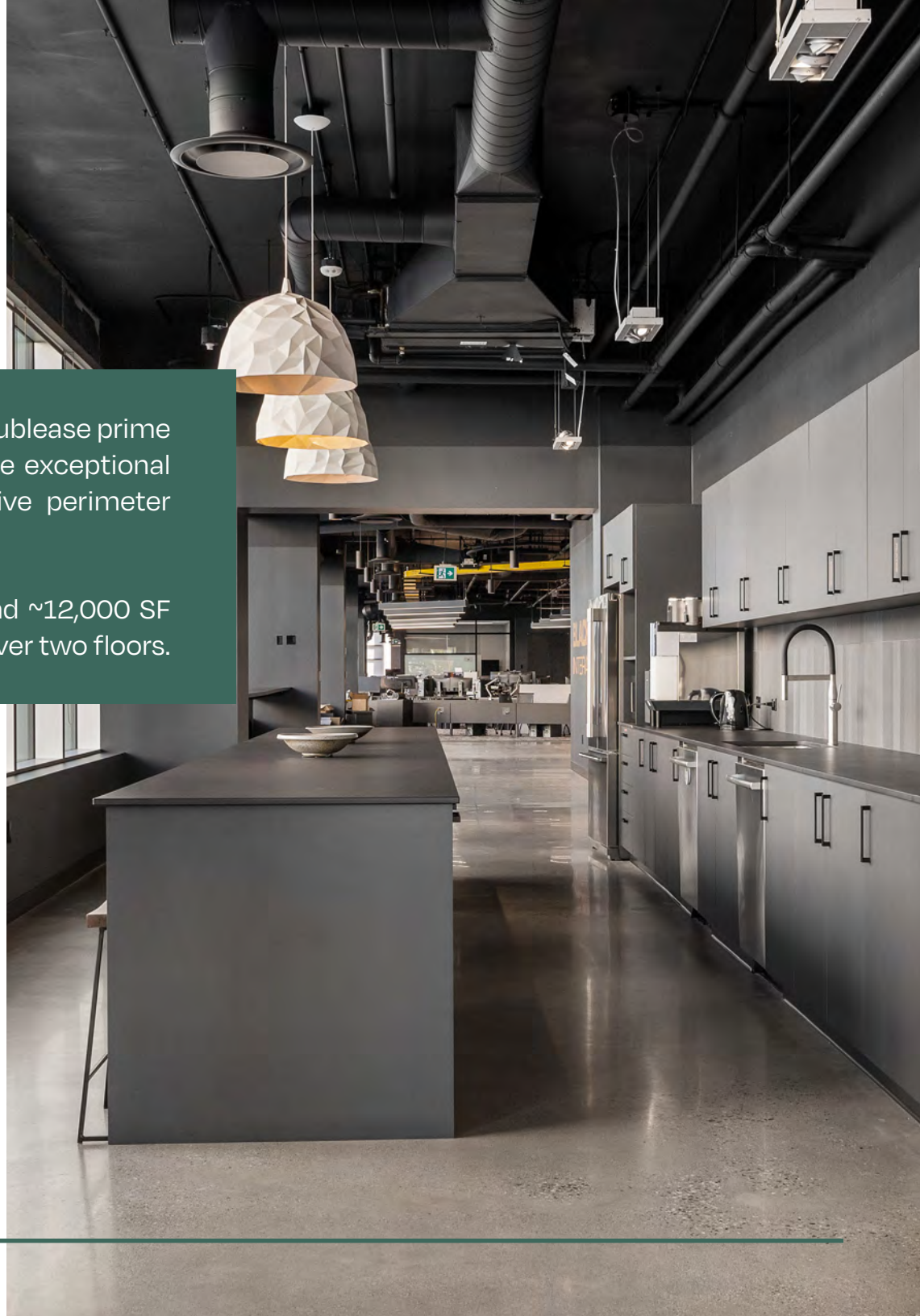
THE OPPORTUNITY

565 Great Northern Way

Introducing an opportunity at 565 Great Northern Way: Sublease prime office space, newly built and delivered in mid-2023. The exceptional workspaces features over-height ceilings and expansive perimeter windows, flooding the interior with natural light.

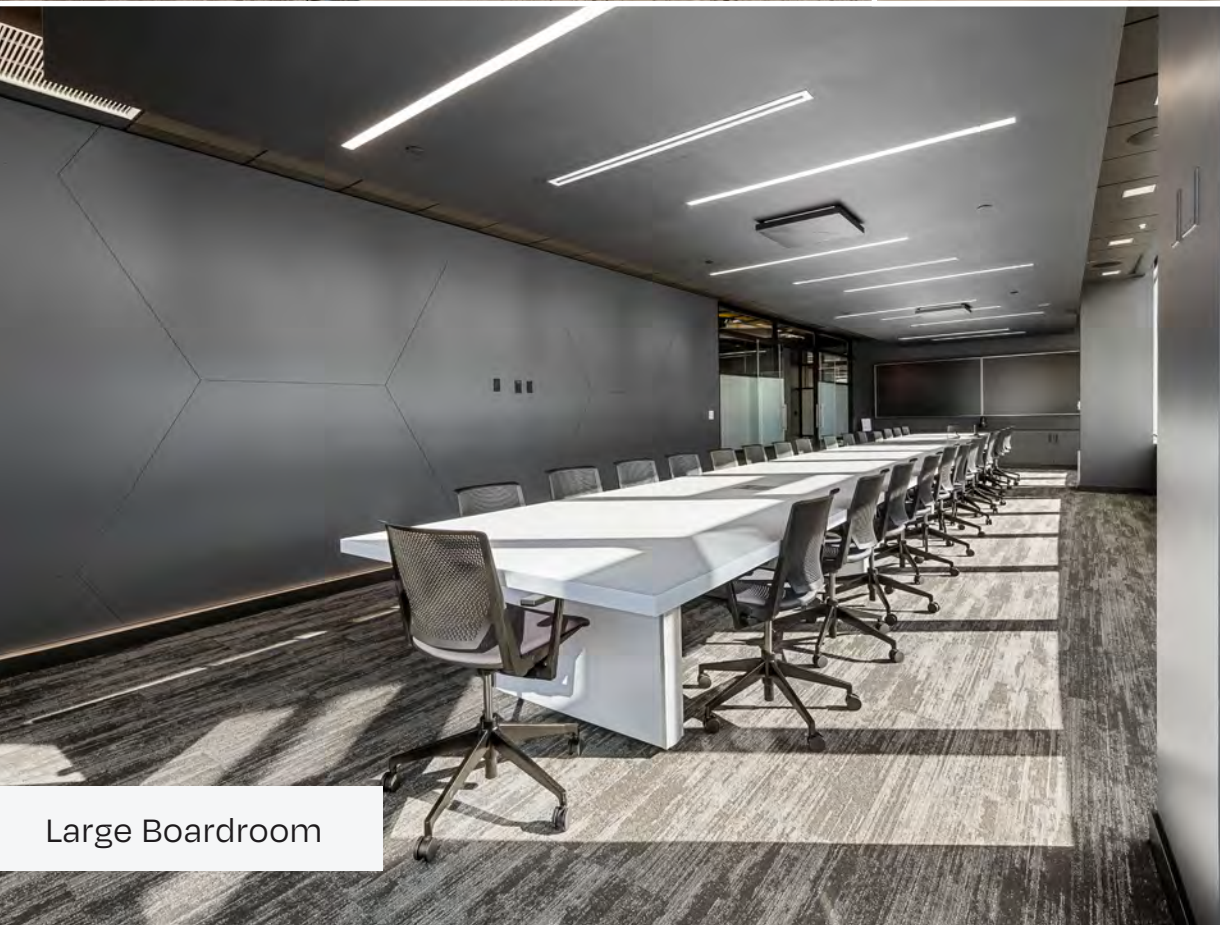
Available spaces include ~29,816 SF on the 4th floor and ~12,000 SF on the 3rd floor, which can be combined for ~41,816 SF over two floors.

Area	3rd Floor: ~12,000 SF 4th Floor: ~29,816 SF Total SF: ~41,816 SF
Term Expiry	August 30, 2030
Availability	30 days' notice
Basic Rent	Please contact listing agent
Additional Rent	\$22.77 PSFPA (2024 est.)





Meeting Rooms



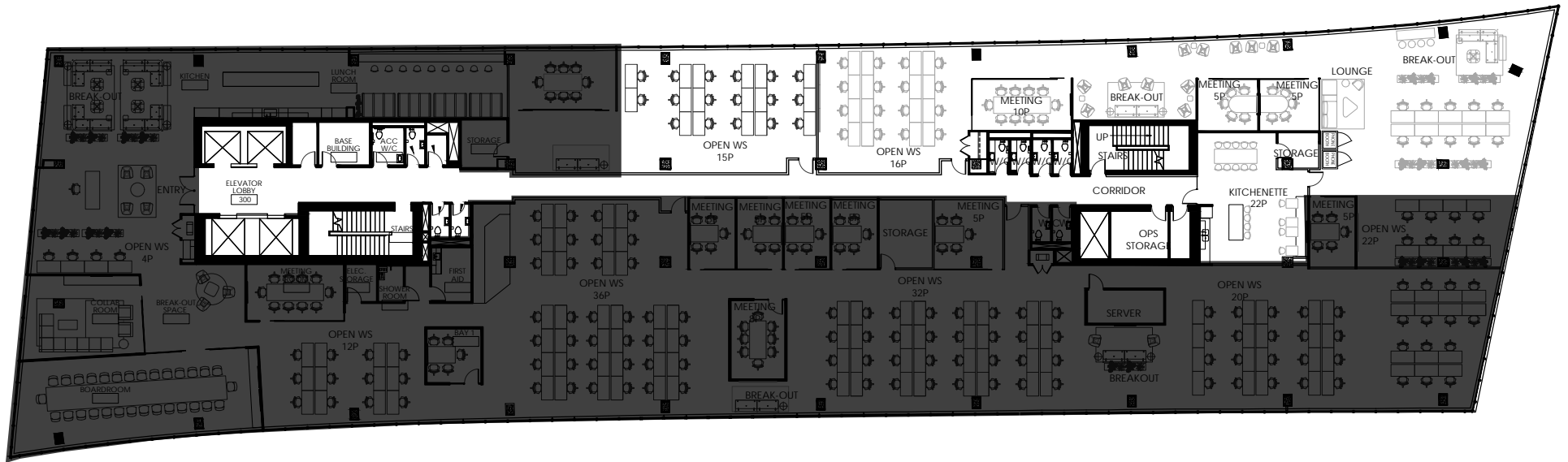
Large Boardroom



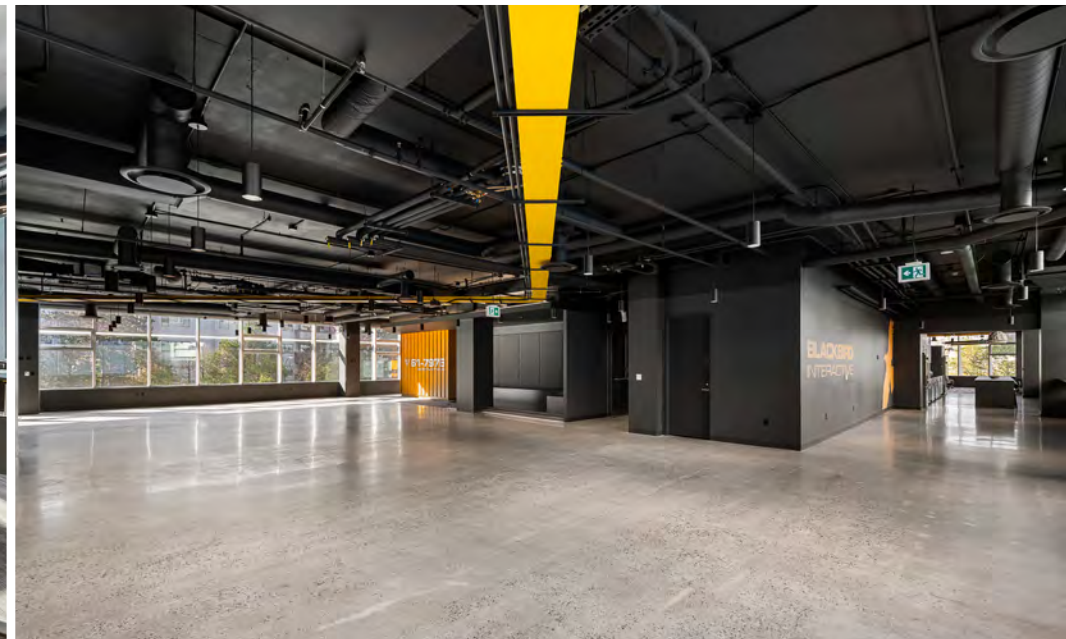
Over-height & exposed ceilings

FLOOR PLAN*

Portion of Third Floor | 12,000 SF (approx.)

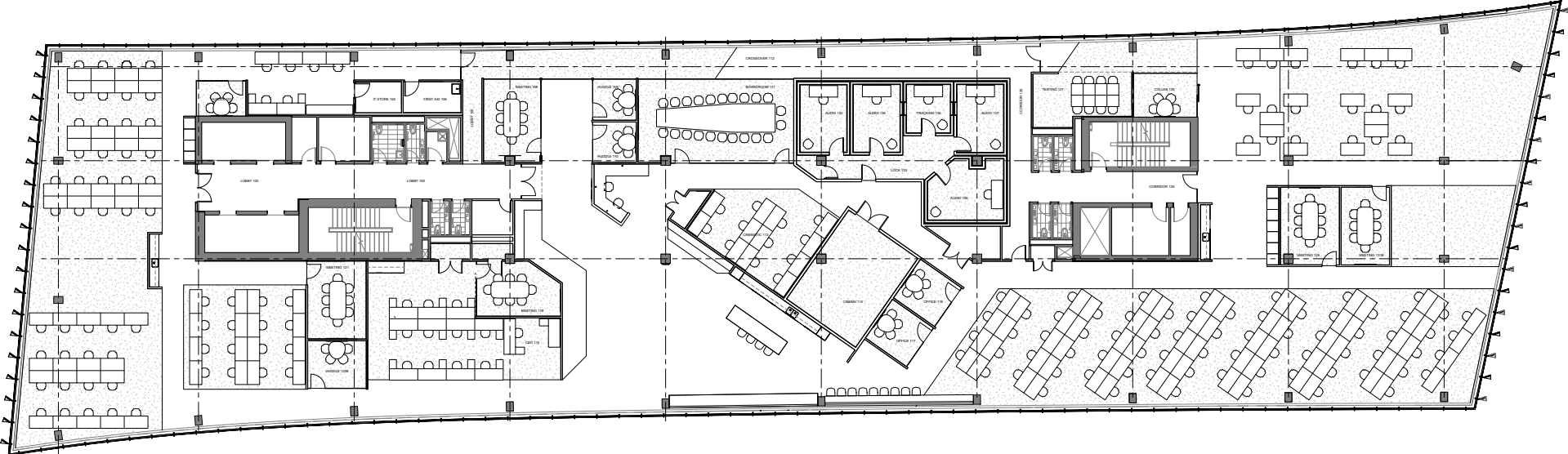


* Floor plan is for illustrative purposes only, and is subject to change.



FLOOR PLAN

Fourth Floor | 29,816 SF (approx.)



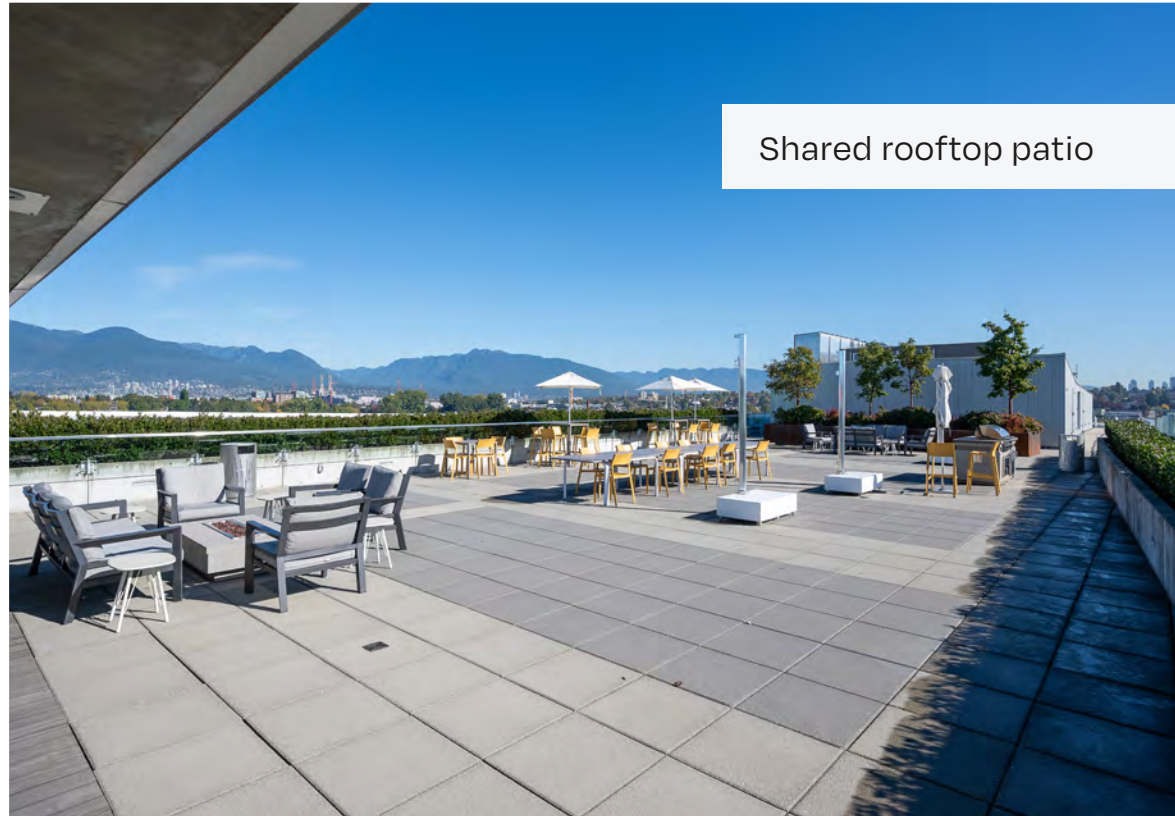
THE BUILDING

Cutting-edge office building with excellent amenities

- Large gym and change rooms
- Shared rooftop patio with panoramic views of the city and North Shore Mountains
- Rooftop meeting room with floor to ceiling windows
- Close proximity to the future Great Northern Way - Emily Carr Canada Line transit station
- Nemesis Coffeehouse located within a public art pavilion resembling a vibrant red flower
- On-site parking
- LEED Gold Certified office building



Nemesis Coffee GNW

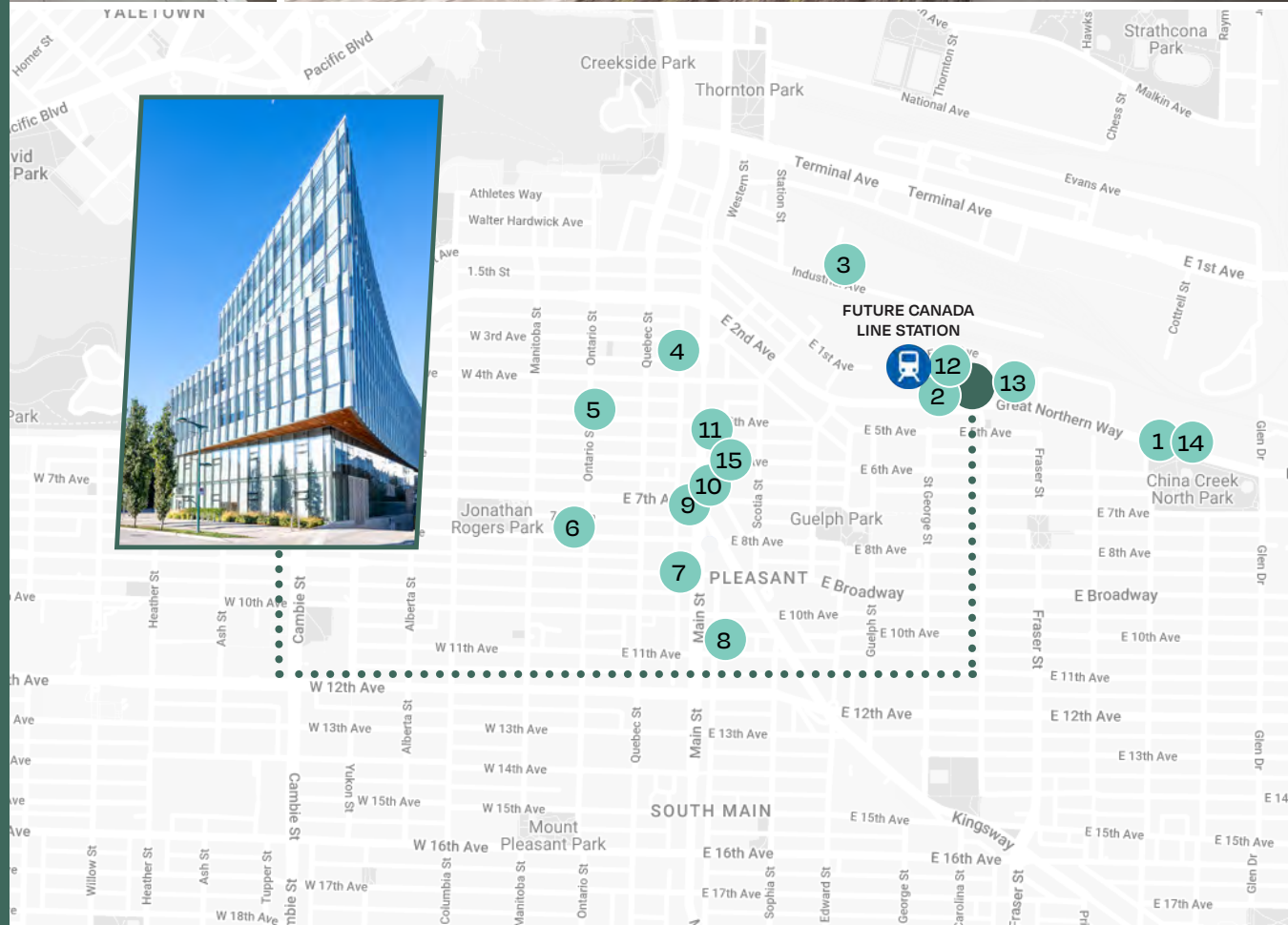


Shared rooftop patio



LOCAL AMENITIES

1. Steve's Poké Bar
2. Nemesis Coffee GNW
3. Beta 5 Chocolates
4. Nuba Cafe
5. Purebread
6. 33 Acres Brewing Company
7. Fable Diner
8. Bar Susu at Novella
9. Red Truck Beer
10. Como Taperia
11. Zarak by Afghan Kitchen
12. Emily Carr University
13. Kafka's Coffee Roasting and Bakery
14. Tim Hortons
15. Cartems Donuts





For more information, please contact:



Matt Carlson

Personal Real Estate Corporation

EXECUTIVE MANAGING DIRECTOR

+1 604 328 4603

matt@floorspace.ca

FLOORSPACE

745 Thurlow Street, Suite 700

Vancouver, BC

V6E 0C5

www.floorspace.ca

THIS DOCUMENT HAS BEEN PREPARED BY FLOORSPACE COMMERCIAL INC. FOR ADVERTISING AND GENERAL INFORMATION ONLY. ALL INFORMATION CONTAINED HEREIN IS FROM SOURCES WE DEEM RELIABLE, AND WE HAVE NO REASON TO DOUBT ITS ACCURACY; HOWEVER, NO GUARANTEE OR RESPONSIBILITY IS ASSUMED THEREOF, AND IT SHALL NOT FORM ANY PART OF FUTURE CONTRACTS. PROPERTY INFORMATION IS SUBMITTED SUBJECT TO ERRORS AND OMISSIONS AND ALL INFORMATION SHOULD BE CAREFULLY VERIFIED. ANY INTERESTED PARTY SHOULD UNDERTAKE THEIR OWN INQUIRIES AS TO THE ACCURACY OF THE INFORMATION. ALL MEASUREMENTS QUOTED HEREIN ARE APPROXIMATE. THIS PUBLICATION IS THE COPYRIGHTED PROPERTY OF FLOORSPACE COMMERCIAL INC. AND/OR ITS LICENSOR(S). COPYRIGHT © 2024 FLOORSPACE COMMERCIAL INC.

