

For Sublease // 18,174 SF

980

Howe Street

// FULL FLOOR OF MODERN TURN-KEY OFFICE SPACE

Situated at the corner of Howe Street and Nelson Street, 980 Howe offers Class AAA office space in close proximity to an abundance of restaurants and minutes away from the Vancouver City Centre transit station.

## // First Class Improvements with Leading Building Amenities

The space has an efficient layout with a combination of open work areas, private offices, meeting rooms, a kitchen, employee lounge area, wellness room and access to an expansive outdoor patio.



THE OPPORTUNITY

# 980 Howe Street

---

Area

Full 7<sup>th</sup> Floor: 18,174 SF  
Demising Option: 7,814 SF

Availability

Flexible

Sublease Expiry

November 2028

Basic Rent

Contact Listing Agents

Additional Rent

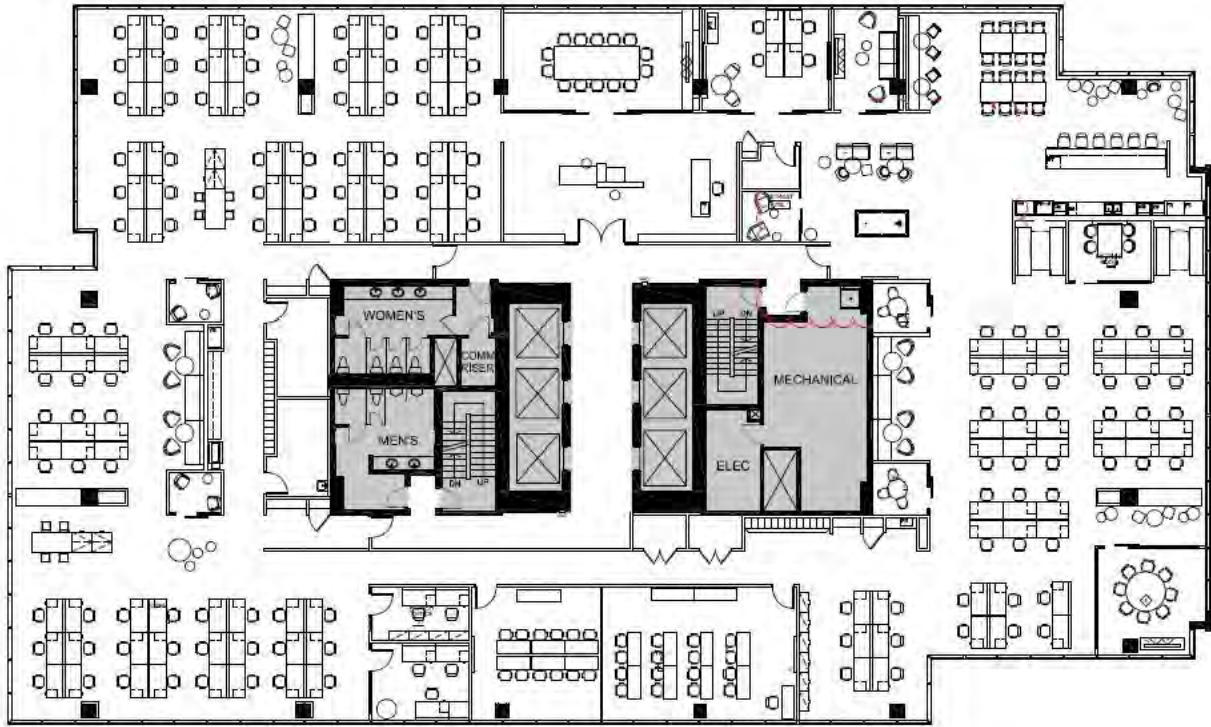
\$24.31 PSF/annum (2023 est.)

Furniture

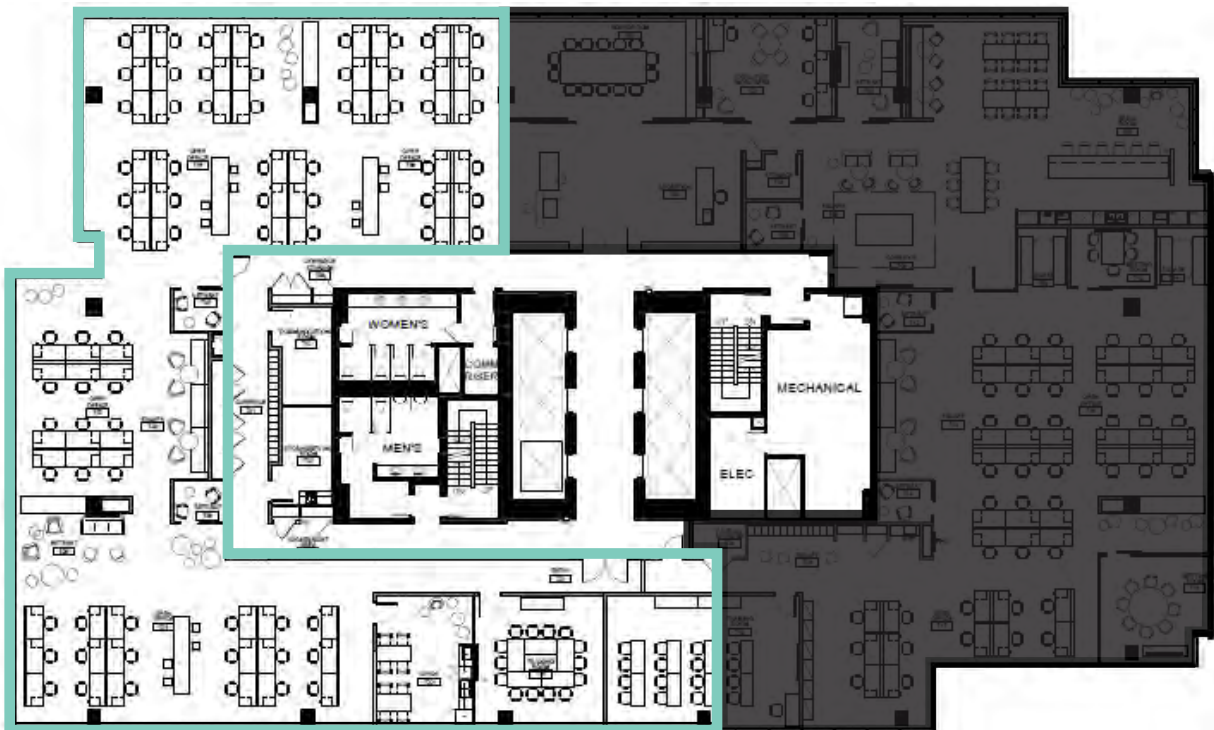
Negotiable

Full Floor: 18,174 SF

[CLICK FOR VIRTUAL TOUR](#)



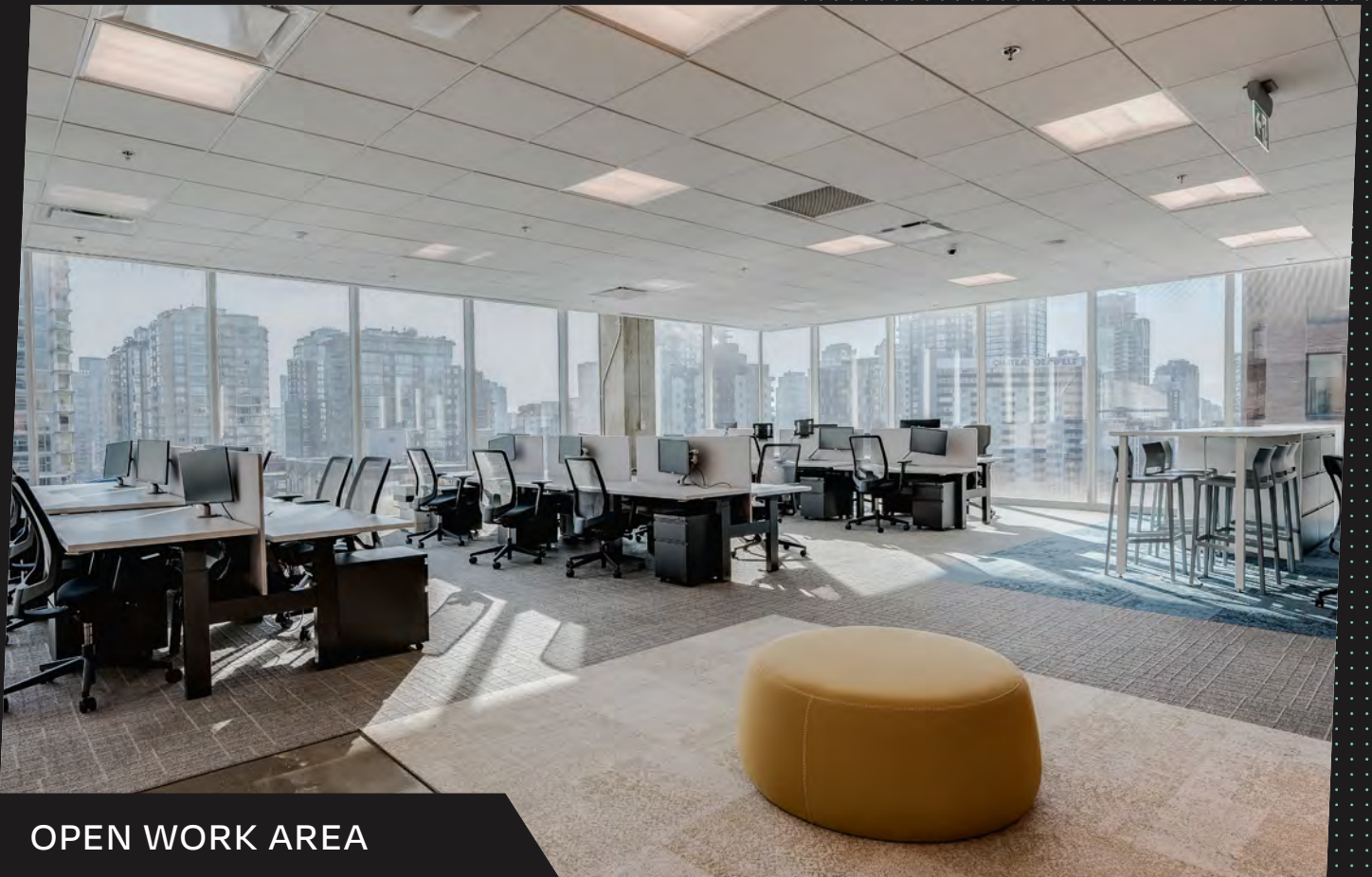
Demising Plan: 7,814 SF



# // High-end finishes and a modern design.

- Efficient layout
- Expansive views of Downtown Vancouver
- Building is BOMA BEST® Platinum, LEED Gold® EB & Shell, and ENERGY STAR® certified

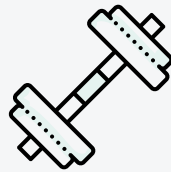
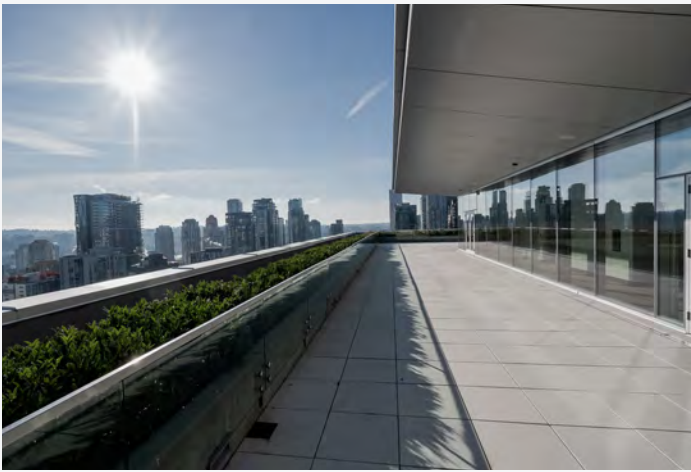




**OPEN WORK AREA**



**COLLABORATIVE SPACES**



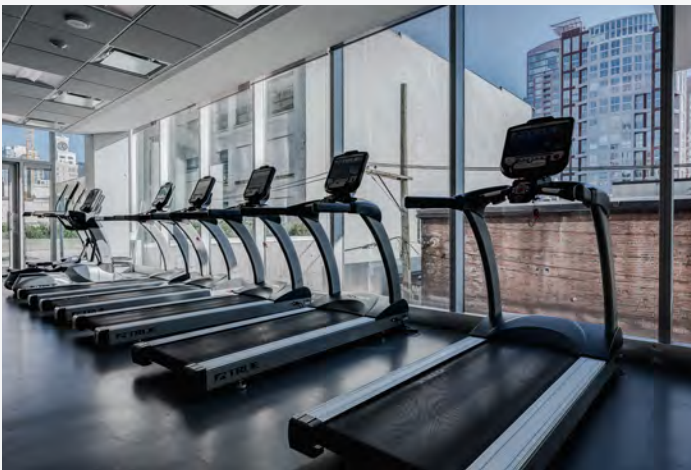
//

Onsite fitness center & end-of-trip facilities



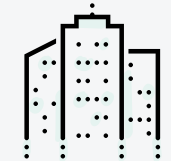
//

Exclusive tenant lounge



//

Penthouse terrace with outdoor garden



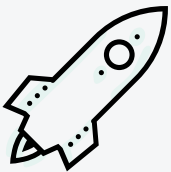
//

Conference center



//

Parking available:  
1 per 1,250 SF



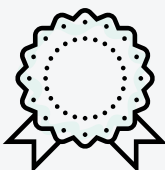
//

On-site EV vehicle charging



//

Ample bike storage

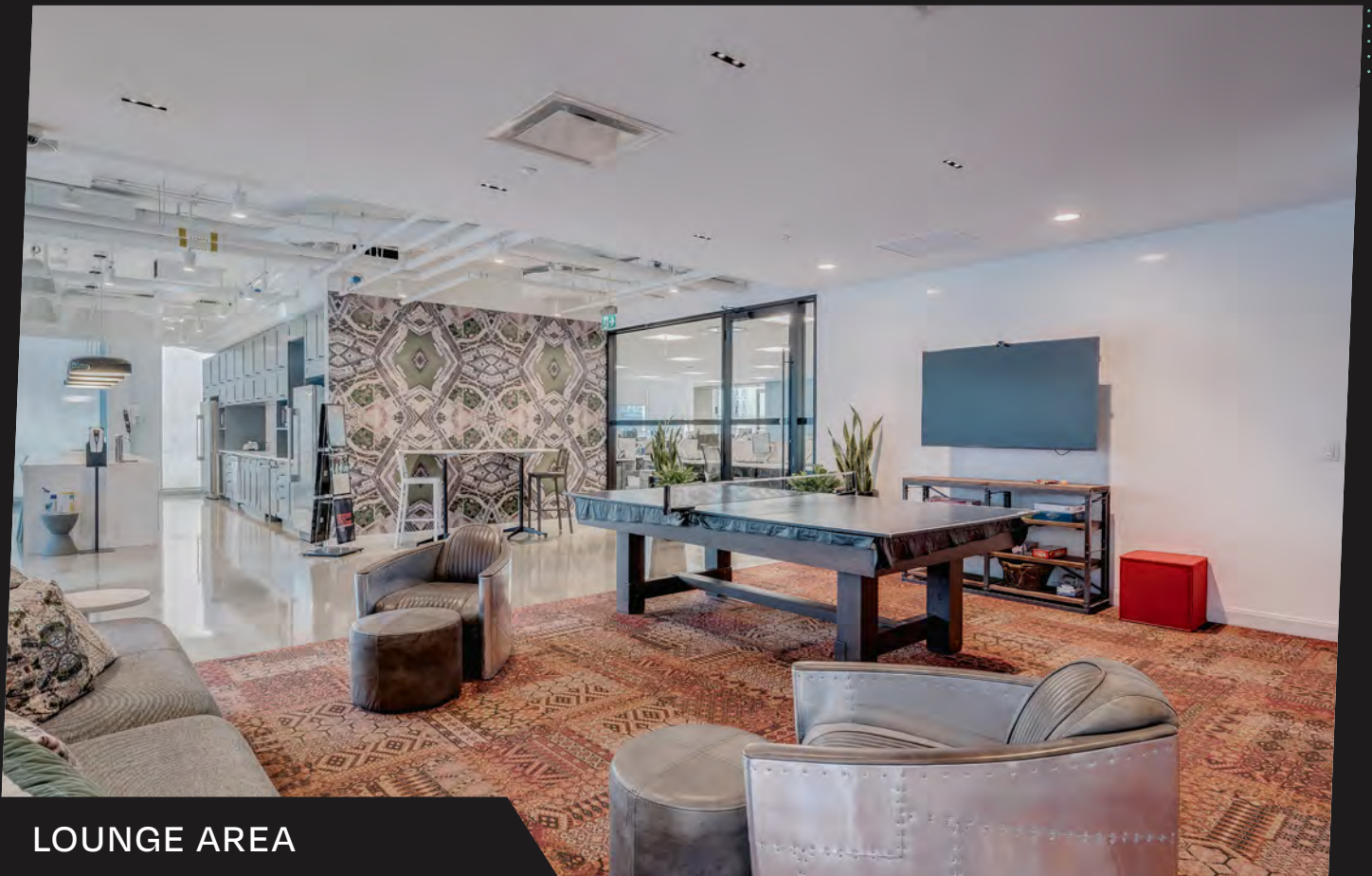


//

BOMA BEST® Platinum  
& LEED Gold® certified



LUNCHROOM

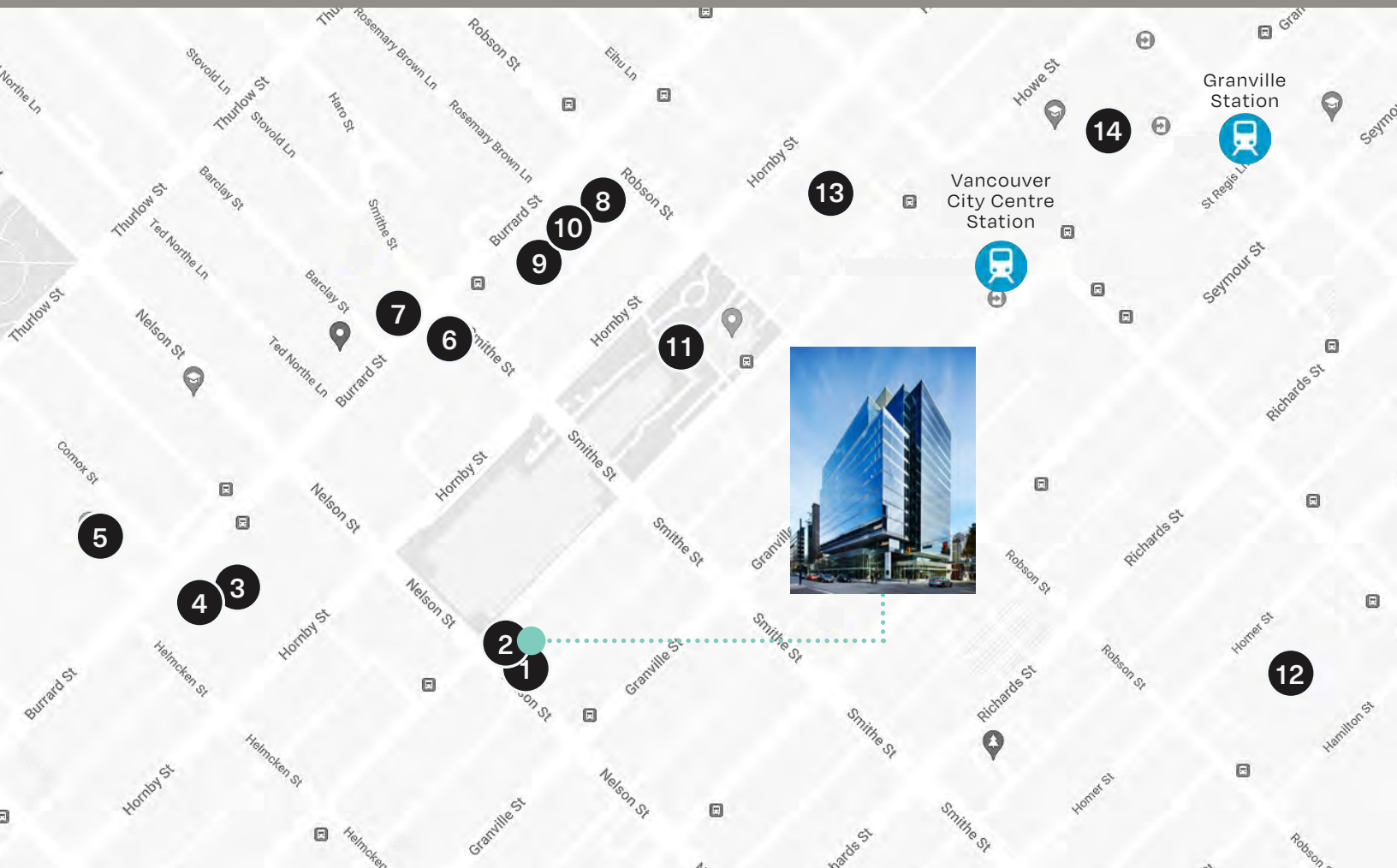


LOUNGE AREA



## THE LOCATION

1. Railtown Cafe
2. Pallet Coffee
3. Sheraton Vancouver Wall Centre
4. Starbucks
5. St. Paul's Hospital
6. Scotiabank Theatre
7. IGA
8. Lululemon
9. Italian Kitchen
10. JOEY Burrard
11. Robson Square
12. Vancouver Public Library
13. Vancouver Art Gallery
14. Pacific Centre





## Kelsey Stanger

SENIOR ASSOCIATE

+1 778 877 5445

[kelsey@floorspace.ca](mailto:kelsey@floorspace.ca)



## Matt Carlson

*Personal Real Estate Corporation*

MANAGING DIRECTOR

+1 604 328 4603

[matt@floorspace.ca](mailto:matt@floorspace.ca)

### FLOORSPACE

1166 Alberni St., Suite 250

Vancouver, BC Canada

V6E 3Z3

[www.floorspace.ca](http://www.floorspace.ca)